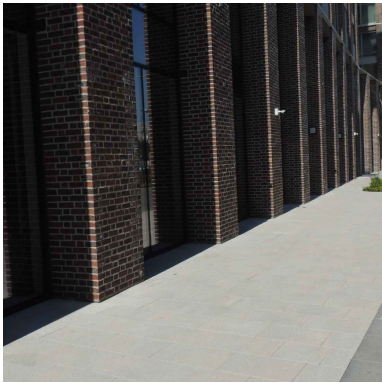
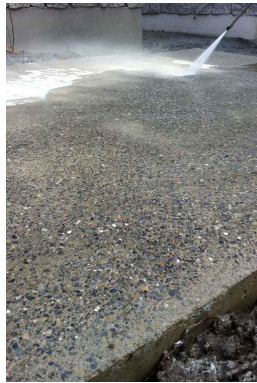




PAVING: IN-SITU CONCRETE Footpaths of in-situ concrete with exposed aggregate finish, with slip-form straight edge treatment or kerb to engineer's design detail and specification. Joints at approx 3.00m centres to allow paving to drain to adjacent gravel or planting.



PAVING - COMMUNAL AMENITY OPEN SPACE Permeable concrete cast stone grid paving system that acts as a semi-vegetative blanket on a horizontal or sloped surface. It has a high drainage capacity. Seed with grass or ground cover seed mix



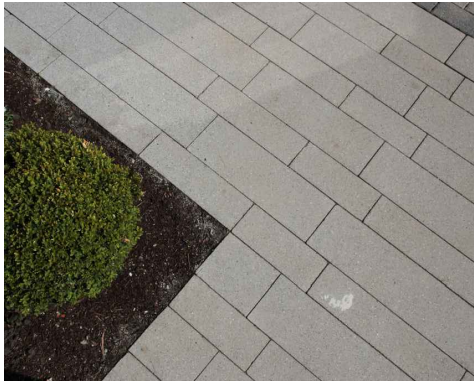
PAVING: HARD-BINDING GOLDEN GRAVEL Permeable golden gravel paving to surface 'gathering spaces' and paths through the amenity open space, with in-situ concrete edging and way-finding details.



PERMEABLE PAVING - HOME-ZONE 'Grange Clima-Pave' in permeable paving system by Kilsaran to streetscape in the home-zone area and to raised vehicular tables, in combination with natural stone paving



PERMEABLE PAVING - CAR-PARKING BAYS 'Newgrange Clima-Pave' permeable paving system by Kilsaran car-park bays throughout development



PERMEABLE PAVING - DWELLING ENTRANCES 'Killeen Clima-Pave' permeable paving system to dwelling entrance areas



SEATS AND BENCHES The Streetlife 'Drifter' benches and seats are made of reclaimed mooring posts 300x300mm, recovered from docks. The supports are made of heavy gauge Corten steel to reduce maintenance



SEATING - AT BASE OF EXISTING OAK TREES Curved seats around existing oak trees at riverside amenity park and at the central gathering space



BIN DOCKS TO DWELLINGS Provided to individual dwellings at entrances, of aluminium construction with larch bee posts, green roofs, stainless steel mesh for climbing plants and FSC wooden side and back panels.



STREET FURNITURE - CYCLE SHELTERS Covered bicycle shelters with bio-diverse green roof substrate and planting, integrated cycle stands, wildlife habitat panels and bird nesting boxes. Robust structures of hot-dip galvanised steel and FSC certified softwood. Options for galvanised steel mesh or timber cladding to rear of shelters and sides of shelters



LIGHT TOUCH BRIDGE TO FIELD DRAINS 'Solo' corten and wooden bridge with slight arch



'NO DIG' PAVING NEAR RETAINED TREES 'Cellweb TRP' CE-marked permeable paving system



LIGHTING ELEMENTS + BOLLARDS
A, B, far left: 'Ful' tapered lighting mast columns by Escofet, in 5mm thick Corten steel finish to act as focal elements in the amenity open space (these come in varying heights 5.0, 7.0, 9.0m hts), using LED light projectors.
C, D E, left: The 'Cream' collection by Escofet incorporates three lighting elements with a prismatic, simple and minimalist design that easily blend into public parks or home gardens. Cream L is a column measuring 3.20 metres in height and is supplemented by beacon Cream M measuring 74 cm; both with identical geometric features and lighting conditions. Cream S is a beacon in the shape of a 25 cm cube. Design One column and two ambient light beacons that are characterised for their prismatic geometry.
NOTE: Lighting layout and specification is indicative-only, and is subject to a detailed design by consulting electrical engineers to meet CIBSE guidelines and be 'bat-friendly' where required.
F, right: 'Rough + Ready' bollards by Streetlife or EQA where required to restrict access to amenity open spaces



LANDSCAPE ARCHITECTS & CONSULTANTS			
Boden Park, Ballyboden, Dublin 16, Ireland		t: 01 9194397 e: info@landscape-design.ie	
PROJECT PROPOSED RESIDENTIAL DEVELOPMENT AT CARLEY'S BRIDGE, ENNISCORTHY, CO. WEXFORD			
CLIENT TORCA DEVELOPMENTS LTD		PROJECT ARCHITECT BRIAN DUNLOP ARCHITECTS	
JOB NO. 20_174		STAGE PLANNING	
DRAWING HARD LANDSCAPE MATERIALS PALETTE			
DRAWING NO. 20_174-PD-021			
DRAWN BY J COUGHLAN MILI		CHECKED COLM KENNY MILI	DATE 20.09.2021
STATUS: DRAFT		SCALE NTS	REVISION -
NOTES: All dimensions are in millimeters unless otherwise stated and shall be checked and confirmed by the contractor on site. Any discrepancies shall be immediately reported to the landscape architect. Work to figured dimensions only. Do not scale from drawing. Do Not Scale. Use Figure Dimensions Only. Not for Construction Purposes unless Specifically Marked.			
© THIS DRAWING IS COPYRIGHT OF LANDSCAPE DESIGN SERVICES			